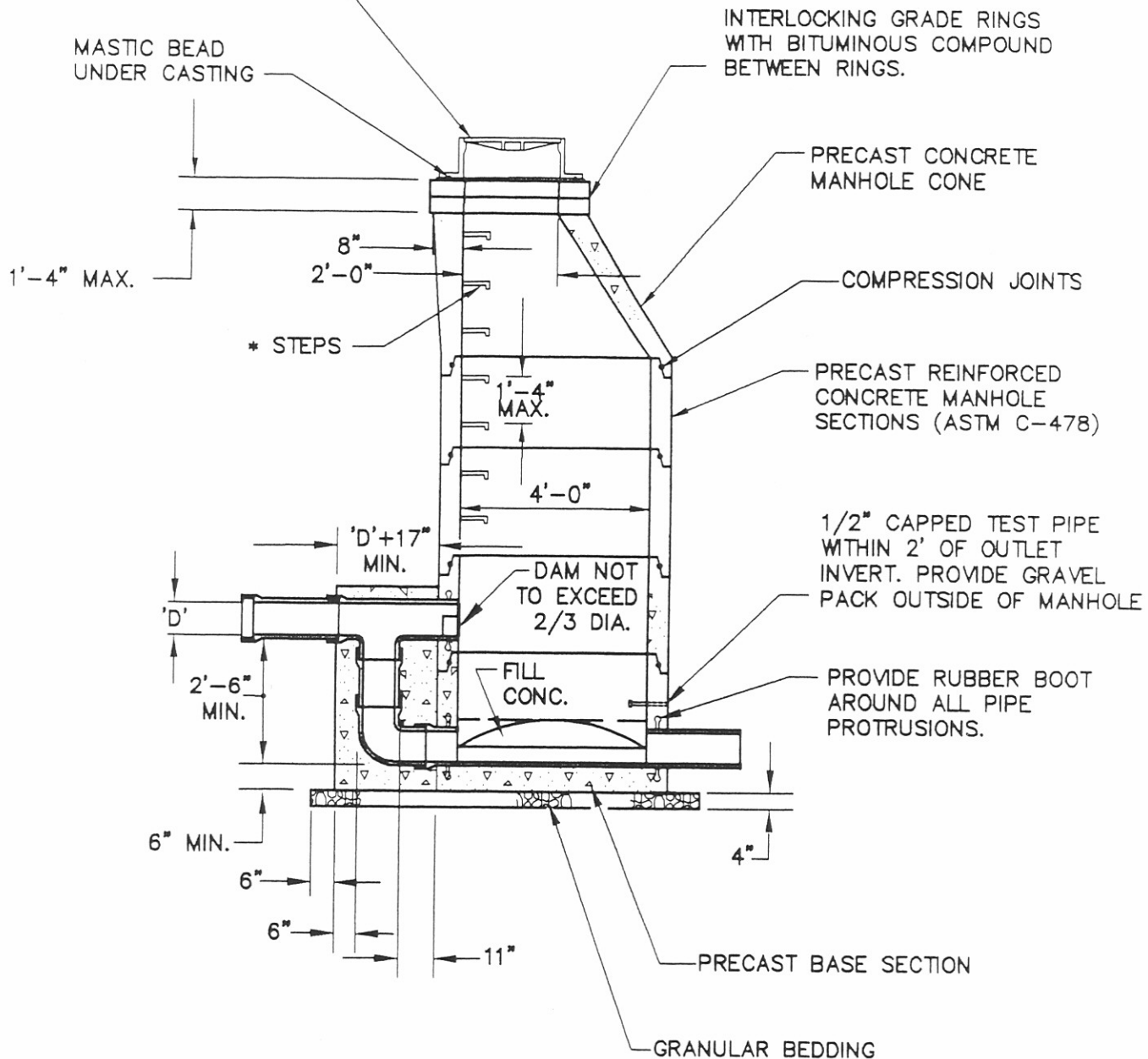


NEENAH R-1772-C OR EAST JORDAN 1022-2
 MANHOLE FRAME AND SOLID COVER WITH
 WORDS "STORM SEWER" OR "SANITARY SEWER"
 AS APPROPRIATE CAST IN RAISED LETTERS.



NOTES:

1. ALL VOIDS TO BE FILLED WITH WATERPROOF NON-SHRINKING GROUT.
2. FOR ADDITIONAL BASE INFORMATION, SEE PRE-CAST CONCRETE MANHOLE BASE DETAIL SD-122.
3. IN FLOOD PRONE AREAS, USE WATER TIGHT SOLID MANHOLE COVER NEENAH R-1915-H, OR EAST JORDAN #1600WT

* STEEL REINFORCED PLASTIC STEPS MEETING ASTM D4101, TYPE II, GRADE 49108. MA INDUSTRIES # PSI-PF OR EQUAL

<p>CITY OF NEW PHILADELPHIA</p> <p>DROP MANHOLE DETAIL WITH PRECAST BASE AND PRECUT HOLES</p>	<p>STANDARD CONSTRUCTION DRAWING NO.</p> <p>SD-127</p> <p>REV. 08-00</p>
--	--